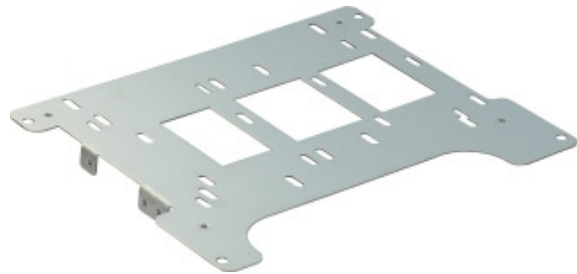


ITX Q-6 with opened side panel  
(incl. HDD-Tray)



HDD tray

## ITX Q-6 Black

Mini-ITX from Inter-Tech - modern, stylish and practical. The Q-6 Black is entirely made from 3.5mm thick aluminum with many ventilation holes and has an excellent thermal load of the components. The solid aluminum body also reduces annoying vibrations to a minimum.

Mini-ITX systems are very energy-saving, so that the external 60W power supply is sufficient to build up a powerful ITX system. If it should be a little more power, you can also use an optional 120W power Supply, cause the internal circuit board is able to process an input voltage of up to 120W.

An intelligent interior layout allows, despite the small space, an easy installation of all components.

## Specifications

Motherboard	ITX
Drive Bays	2.5" Slim: 2
Front Connectors	USB 2.0: - Microphone: - Headphone: -
Opening	WLAN antenna: 2
Cooling System	HDD-Tray: 1x 50x50x10mm (laterally, optional)
Power Input	For 12V plugs with dimensions of 5.5x2.5x10.7mm
Maximum CPU cooler height	35mm
Maximum graphics card length	-
Packing Units	Shipping Unit: 1 Piece Packing Unit: 8 Pieces
Guarantee and Warranty	Case 24 Months Warranty Power Supply 24 Months Guarantee
Article Number	88881146
EAN-Code	4260133124752
Scope of Delivery	External 60W Power Supply Circuit board max. 120W Cable ties Screw Set Rubber feet (adhesive)
Features	External 60W Power Supply
Optional Accessories	VESA Bracket (Art. 88885241) External 90W PSU (Art. 88882098) External 120W PSU (Art. 88882103)

## Dimensions and Weight

	Cage	Case	Package
Height	56mm	56mm	272mm
Width	200mm	200mm	130mm
Depth	224mm	224mm	256mm

Weight (net): 1.10Kg  
Weight (gross): 1.74Kg

## DC/DC-Platine:

Connectors	Quantity	Max. Length
Mainboard 20+4Pin	1x	-
P4 12V 4Pin	1x	-
IDE 4Pin	1x	-
S-ATA	2x	-

DC Output	Output Voltage (V)	Max. Output Current (A)
+3.30 V	+3.30	10.0
+5.00 V	+5.00	10.0
+5.00 VSB	+5.00	2.0
+12.00 V	+12.00	4.5
-12.00 V	-12.00	0.15

**Certification:**

